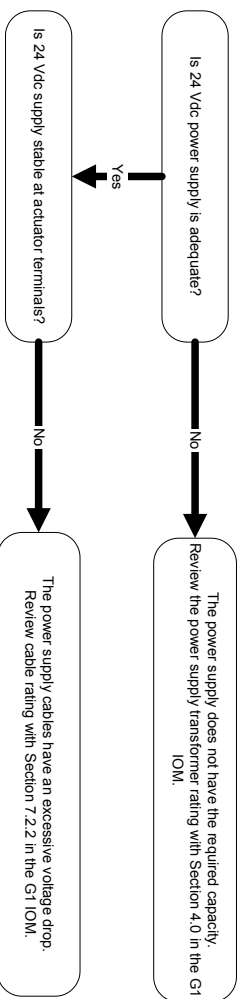


Emech Troubleshooting Guide



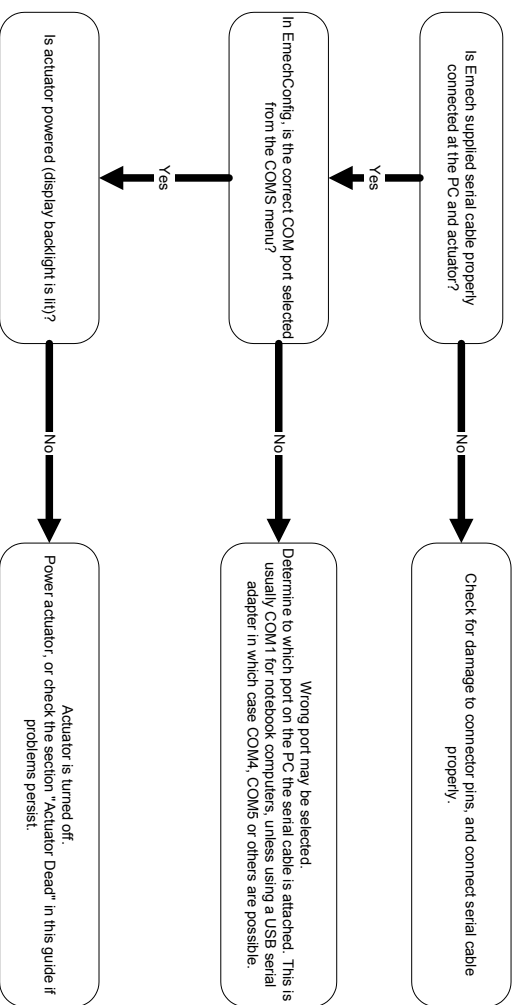
Actuator display lights up intermittently, but does not move

Check



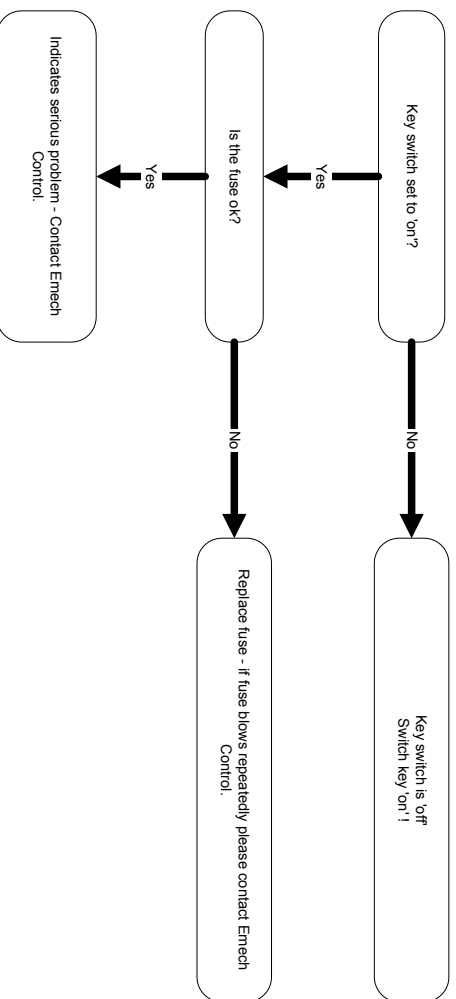
No communication when using EmechConfig

Check



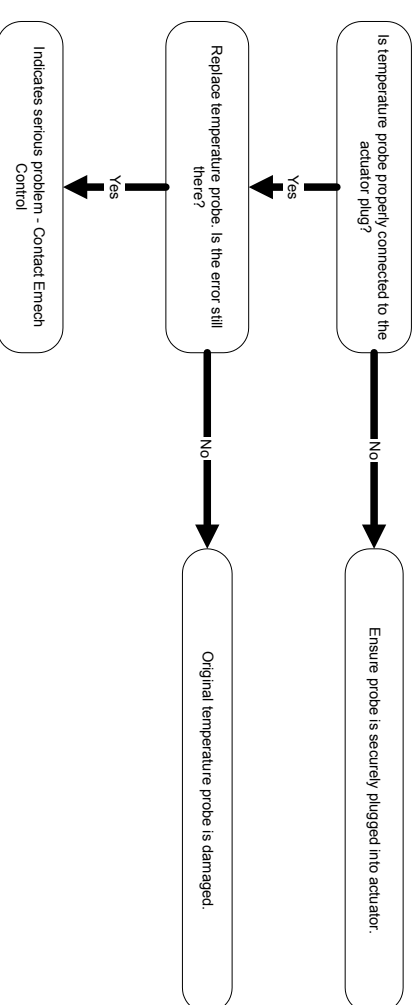
Actuator dead (display not lit, no movement)

Check

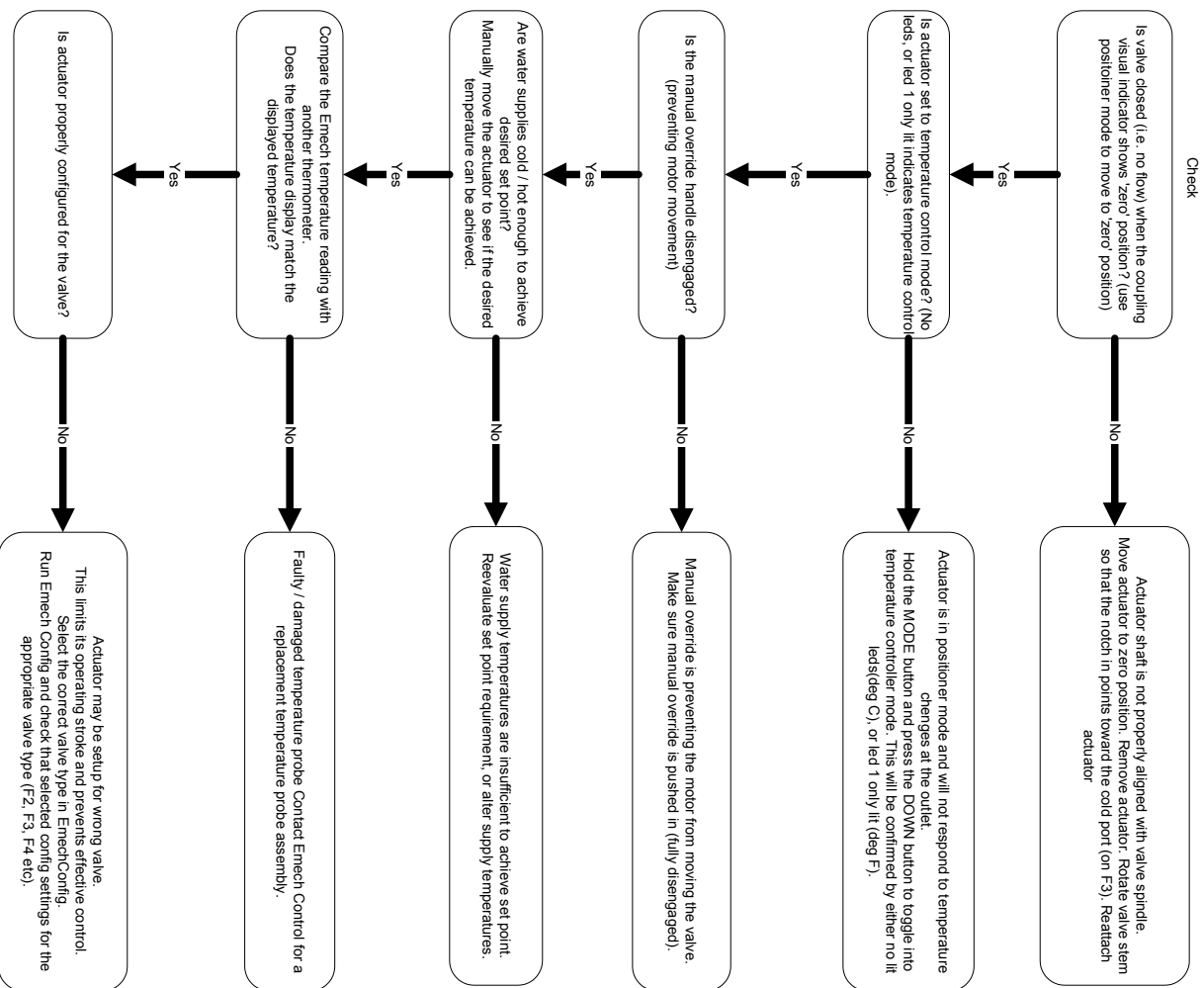


Actuator displays 'E2' when set Temperature Controller Mode

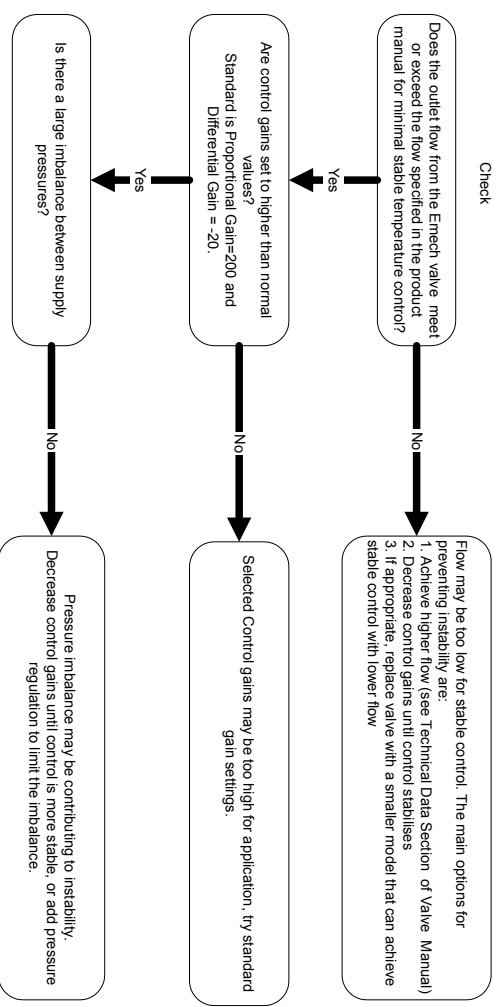
Check



Failure to Reach Set Point



Control is Unstable / Oscillates



Actuator does not respond as expected to REMOTE current loop signal

